

SOUTH AUSTRALIAN ECONOMIC INDICATORS

EMBARGO: 11:30AM (CANBERRA TIME) WED 1 OCT 2003

C O N T E N T S

	<i>page</i>
Notes.....	2
REVIEW	
Overview	3
Selected features	4
TABLES	
List of tables	5
Statistical summary	6
State summary	8
State accounts	9
International trade	10
Consumption and investment	13
Production	15
Consumer price index	19
Labour force and demography	20
Average weekly earnings	23
Financial markets	24
ADDITIONAL INFORMATION	
Sources for summary tables	25

I N Q U I R I E S

- For further information about these and related statistics, contact Felicité McCracken on Adelaide 08 8237 7604 or the National Information and Referral Service on 1300 135 070.

NOTES

FORTHCOMING ISSUES

<i>ISSUE</i>	<i>RELEASE DATE</i>
November 2003	3 November 2003
December 2003	1 December 2003
January 2004	19 December 2003
February 2004	2 February 2004
March 2004	1 March 2004
April 2004	1 April 2004

ABOUT THIS PUBLICATION

South Australian Economic Indicators is a monthly publication which contains the latest available data at the time of preparation for a range of statistical series that have been identified as indicators of economic activity in this State. In a number of cases the figures presented are preliminary and subject to revision in subsequent issues.

SYMBOLS AND OTHER USAGES

\$b	billion dollars (thousand million)
\$m	million dollars
n.a.	not available
n.y.a.	not yet available
qtr	quarter
*	subject to sampling variability too high for most practical purposes
..	not applicable
0, 0.0	nil, or rounded to zero

ROUNDING

Where figures have been rounded, discrepancies may occur between sums of the component items and totals.

INFORMATION

More detailed information on each series, including explanatory and technical notes, can be obtained from other Australian Bureau of Statistics publications or alternative data sources. To assist those seeking further information, publication source numbers are shown in tables 1 and 2, as a reference to the source of summary tables section on page 25.

Alan Mackay
Regional Director
South Australia

OVERVIEW

The data in this Overview are presented in trend terms, unless otherwise stated.

INTERNATIONAL TRADE

The value of South Australian merchandise exports (in original terms) for the month of July 2003 was \$585.2m. This was an increase of 0.6% over June 2003 but was 16.9% less than the value of exports in July 2002 (704.1\$m).

The value of South Australian merchandise imports (in original terms) for July 2003 was \$445.9m. This was an increase of 11.8% from \$398.7m recorded in June 2003 and 1.9% less than the June 2002 figure of \$454.8m.

CONSUMPTION AND INVESTMENT

National Accounts figures for the June 2003 quarter showed that state final demand in South Australia grew by 2.5% since the March quarter to \$14,299m. Household consumption expenditure grew by 1.8% to \$8,607m. Private gross capital formation grew by 4.2% to \$2,607m, an increase of 19.8% since June 2002.

In the twelve months to July 2003 retail turnover increased by 4.9% to \$1,120.1m, with weak growth over the last two months.

New motor vehicle sales rose 1.2% in August to 5,235. This was an increase of 18.5% over the year since August 2002.

HOUSING

The estimate of private sector dwelling units approved has risen for the past five months to 840 in July 2003, while the estimate for all dwelling approvals has remained relatively steady for the past four months. The July 2003 estimate of 865 is 10% lower than 12 months ago.

CONSUMER PRICE INDEX

The all groups consumer price index in Adelaide for the June quarter 2003 was 144.3, an increase of 3.7% on the level recorded for the June 2002 quarter and down 0.2% on the March quarter 2003.

LABOUR FORCE AND DEMOGRAPHY

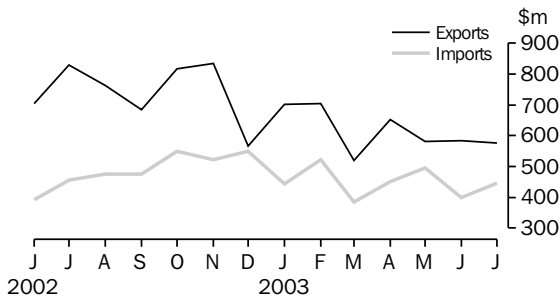
The estimate of employed persons in South Australia has risen continuously since April 2001 to 719,700 in August 2003, and was 26,800 persons higher than twelve months ago (692,900), an increase of 3.9%. The total number of persons employed full-time in South Australia was 503,500 in August 2003, which was 6.0% higher than the August 2002 estimate of 475,200. In August 2003, the unemployment rate for South Australia was 6.0% compared with 6.5% in August 2002, and the participation rate in South Australia was 62.1% in August 2003, 1.4 percentage points higher than the August 2002 rate of 60.7%.

FINANCIAL MARKETS

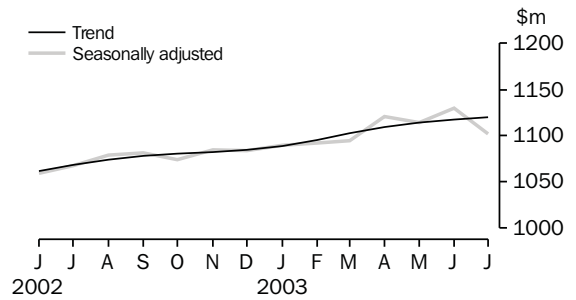
The value of secured housing finance commitments (excluding alterations and additions) continued an upward trend reaching a value of \$662m in July 2003, an increase of 2.3% over the previous month, and an increase of 32.1% over the value of commitments in July 2002 (\$501m).

SELECTED FEATURES

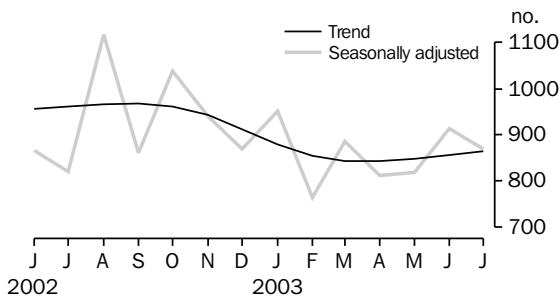
MERCHANDISE EXPORTS AND IMPORTS



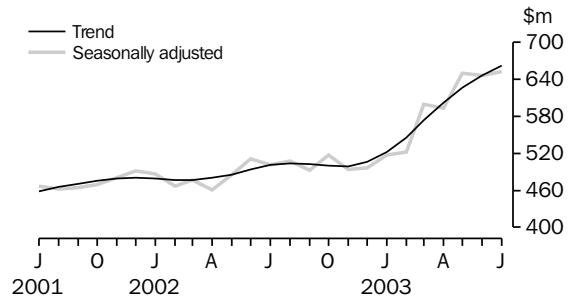
RETAIL TURNOVER



DWELLING UNITS APPROVED

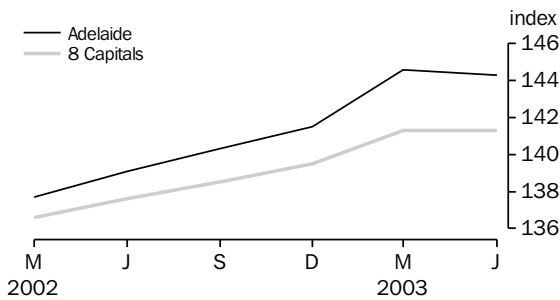


SECURED HOUSING FINANCE COMMITMENTS(a)

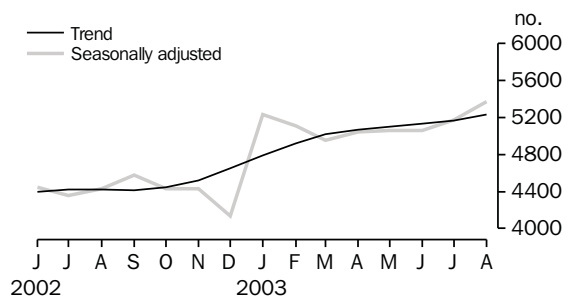


(a) Excludes alterations and additions. Includes refinancing.

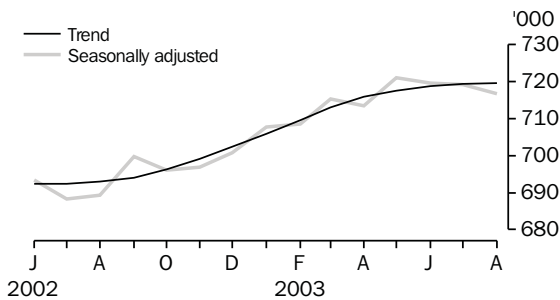
CONSUMER PRICE INDEX



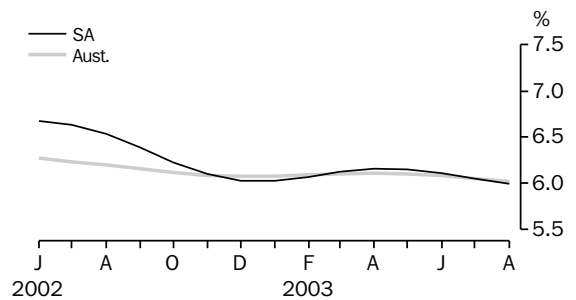
NEW MOTOR VEHICLE SALES



EMPLOYED PERSONS



UNEMPLOYMENT RATE—TREND



LIST OF TABLES

			Page
STATISTICAL SUMMARY	1	Statistical summary	6
	2	State summary	8
STATE ACCOUNTS	3	State accounts at current prices	9
	4	State accounts at chain volume measures	9
INTERNATIONAL TRADE	5	Merchandise exports, by selected commodity group	10
	6	Merchandise exports, by selected countries and country groups	11
	7	Merchandise imports, by selected commodity group	12
CONSUMPTION AND INVESTMENT	8	Turnover of retail establishments, by industry—trend	13
	9	New motor vehicle sales, by type of vehicle	13
	10	Actual private new capital expenditure, by selected industry and type of asset	14
	11	Tourist accommodation	14
PRODUCTION	12	Building approvals	15
	13	Building commencements	16
	14	Value of building work done and completed during period	17
	15	Production, livestock products and selected commodities	18
	16	Consumer price index, by group—Adelaide	19
LABOUR FORCE AND DEMOGRAPHY	17	Estimated resident population and components of population change	20
	18	Births, deaths, marriages and divorces	20
	19	Civilian labour force status	21
	20	Civilian labour force, unemployment and participation rates	22
AVERAGE WEEKLY EARNINGS	21	Average weekly earnings of employees	23
FINANCIAL MARKETS	22	Secured housing finance commitments	24
	23	Finance commitments	24

Indicator	Period	South Australia			Australia			SA as a % of Aust.	Source index
		Number	% change from		Number	% change from			
			Previous period	Same period previous year		Previous period	Same period previous year		
State accounts									
Domestic final demand									
Current prices trend (\$m)	Jun qtr 03	14 299	2.5	9.5	197 018	1.5	7.3	7.3	(1)
Chain volume measures trend (\$m)	Jun qtr 03	13 812	1.8	6.5	191 307	1.0	5.0	7.2	(1)
Private final consumption expenditure									
Current prices trend (\$m)	Jun qtr 03	8 607	1.8	7.8	115 862	1.3	5.9	7.4	(1)
Chain volume measures trend (\$m)	Jun qtr 03	8 240	1.2	4.2	112 260	1.0	3.5	7.3	(1)
Private gross fixed capital formation									
Current prices trend (\$m)	Jun qtr 03	2 675	4.2	19.8	39 044	1.7	12.6	6.9	(1)
Chain volume measures trend (\$m)	Jun qtr 03	2 654	4.5	19.4	38 262	1.2	10.6	6.9	(1)
Compensation of employees									
Current prices trend (\$m)	Jun qtr 03	5 923	1.6	6.2	92 079	1.5	6.5	6.4	(1)
International accounts									
Exports (\$m)	Jul 03	585.2	0.6	-16.9	8 546.6	-2.9	-15.6	6.8	(2)
Imports (\$m)	Jul 03	445.9	11.8	-1.9	10 627.2	-0.8	-6.0	4.2	(2)
Consumption and investment									
Retail turnover									
Current prices original (\$m)	Jul 03	1 082.8	3.6	5.0	14 841.4	5.6	7.3	7.3	(3)
Current prices trend (\$m)	Jul 03	1 120.1	0.2	4.9	15 074.5	0.7	5.8	7.4	(3)
Chain volume measures original (\$m)	Jun qtr 03	3 140.2	4.1	4.5	41 936.8	3.3	3.7	7.5	(3)
New motor vehicle sales									
Original (no.)	Aug 03	5 263	-0.7	16.0	76 173	-4.2	9.4	6.9	(4)
Trend (no.)	Aug 03	5 235	1.2	18.5	79 278	1.4	13.7	6.6	(4)
Private new capital expenditure									
Current prices original (\$m)	Jun qtr 03	1 138	26.9	26.9	13 423	15.2	11.2	8.5	(5)
Current prices trend (\$m)	Jun qtr 03	1 088	8.4	25.9	12 836	0.8	11.1	8.5	(5)
Private new capital expenditure (\$m)	2002-03	4 015	29.0	.	51 098	15.1	.	7.9	(5)
Tourist accommodation takings (\$m)	Mar qtr 03	59.1	-8.9	1.5	1 244.7	-5.3	2.5	4.8	(6)
Production									
Dwelling unit approvals									
Original (no.)	Jul 03	975	7.5	4.3	15 936	11.8	5.7	6.1	(7)
Trend (no.)	Jul 03	865	0.8	-10.0	14 600	1.5	-5.1	5.9	(7)
Dwelling units commenced (no.)	Mar qtr 03	2 376	-13.9	1.8	38 640	-13.4	0.3	6.1	(8)
Value of non-residential building approvals—trend (\$m)									
	Jul 03	86.2	-22.7	61.7	1 449.3	28.7	37.5	5.9	(7)
Value of total building activity									
Commenced (\$m)	Mar qtr 03	570.8	-23.5	13.2	11 621.1	-13.6	8.5	4.9	(8)
Work done (\$m)	Mar qtr 03	592.2	-2.9	18.3	11 298.3	-7.5	19.8	5.2	(8)
Work yet to be done (\$m)	Mar qtr 03	994.7	-0.4	33.8	20 530.9	4.1	26.0	4.8	(8)
Value of engineering construction work done (\$m)									
	Mar qtr 03	444.7	-10.2	20.3	5 989.4	-5.6	17.0	7.4	(9)
Manufacturing production									
Red meat trend (tonnes)	Jun qtr 03	58 844	-3.6	-4.3	741 807	-3.1	-4.8	7.9	(11)
Mineral exploration expenditure (other than for petroleum) (\$m)									
	Jun qtr 03	11.0	83.3	11.1	203.4	32.6	20.9	5.4	(12)

Indicator	Period	South Australia			Australia			SA as a % of Aust.	Source index
		Number	% change from		Number	% change from			
			Previous period	Same period previous year		Previous period	Same period previous year		
Prices(a)									
CPI—All groups (index no.)	Jun qtr 03	144.3	-0.2	3.7	141.3	0	2.7	..	(13)
Price index of materials used in house building (index no.)	Mar qtr 03	136.8	0.4	2.8	132.1	0.9	3.4	..	(14)
Price index of materials used in building other than houses (index no.)	Mar qtr 03	125.1	1.1	3.6	125.7	1.3	4.5	..	(14)
Price index of established houses (index no.)	Jun qtr 03	199.1	7.6	24.7	223.8	5.0	18.1	..	(15)
Price index of project homes (index no.)	Jun qtr 03	157.9	0.8	4.4	147.9	2.2	5.7	..	(15)
Labour force and demography									
Population (resident at end qtr) ('000)	Mar qtr 02	1 528.2	0.3	0.6	19 875.0	0.5	1.3	7.7	(16)
Natural increase of the population ('000)	Mar qtr 02	1.7	-62.0	-1.9	28.1	-8.1	-10.6	6.1	(16)
Labour force									
Original ('000)	Aug 03	757.5	-0.4	3.1	10 035.9	-0.4	-35.9	7.5	(17)
Trend ('000)	Aug 03	765.5	0.0	3.3	10 104.4	-0.1	1.5	7.6	(17)
Employed persons									
Original ('000)	Aug 03	713.4	-0.7	4.0	9 472.4	-0.4	1.7	7.5	(17)
Trend ('000)	Aug 03	719.7	0.0	3.9	9 496.1	0.0	1.7	7.6	(17)
Participation rate									
Original(b) (%)	Aug 03	61.5	-0.3	1.4	63.3	0.3	-0.2	..	(17)
Trend(b) (%)	Aug 03	62.1	-0.1	1.4	63.5	-0.1	0.0	..	(17)
Unemployment rate									
Original(b) (%)	Aug 03	5.8	0.2	-0.9	5.6	0.0	-0.4	..	(17)
Trend(b) (%)	Aug 03	6.0	-0.1	-0.5	6.0	-0.1	-0.2	..	(17)
Job vacancies ('000)	May 03	5.8	-17.7	-17.0	99.5	-10.6	10.1	5.9	(18)
Industrial disputes ('000 working days lost)	Jun 03	0.7	600.0	75.0	20.2	-6.0	14.8	3.5	(19)
Income									
Average weekly earnings (full-time adults; ordinary time)									
Original (\$)	May qtr 03	859.7	1.0	7.5	921.0	2.3	6.3	..	(20)
Trend (\$)	May qtr 03	864.6	2.6	7.9	918.8	1.7	5.7	..	(20)
Wage cost index (total hourly rate excluding bonuses)(c) (index no.)	Jun qtr 03	119.7	0.5	3.9	120.1	0.6	3.6	..	(21)
Financial markets									
Secured housing finance(d)									
Original (\$m)	Jul 03	674.6	4.0	28.8	11 317.4	10.6	28.5	6.0	(22)
Trend (\$m)	Jul 03	661.7	2.3	32.1	10 427.6	2.9	24.6	6.3	(22)
Finance commitments									
Personal (\$m)	Jul 03	457.5	1.7	20.9	7 027.5	7.6	21.8	6.5	(23)
Commercial (\$m)	Jul 03	1 104.2	0.0	9.7	25 233.5	-5.3	2.5	4.4	(23)
Lease (\$m)	Jul 03	16.6	-10.7	9.1	628.2	-2.7	4.0	2.6	(23)
Interest rates(b)									
Banks new housing loans (%)	Aug 03	6.55	0.0	0.0	..	(24)
Bank loans—small, medium business(e) (%)	Aug 03	8.35	0.0	0.0	..	(24)
Bank loans—large business (%)	Aug 03	8.35	0.0	0.0	..	(24)

(a) Base year of each index 1989-90 = 100.

(b) Change is shown in terms of percentage points.

(c) Base year of index Sep 1997 = 100.

(d) Excludes alterations and additions. Includes refinancing.

(e) Rate for business loans over \$50,000.

2

STATE SUMMARY

<i>Indicator</i>	<i>Period</i>	<i>NSW</i>	<i>Vic.</i>	<i>Qld</i>	SA	<i>WA</i>	<i>Tas.</i>	<i>NT</i>	<i>ACT</i>	<i>Source index</i>
SELECTED INDICATORS										
CPI—All groups(a) (index no.)	Jun qtr 03	142.2	140.9	141.8	144.3	137.4	140.8	137.9	140.7	(13)
Participation rate trend (%)	Aug 03	62.5	63.1	64.5	62.1	66.1	58.7	69.8	71.1	71
Unemployment rate trend (%)	Aug 03	5.9	5.8	6.7	6.0	6.0	7.0	5.8	4.4	4
Average weekly earnings (full-time adults; ordinary time) trend (\$)	May qtr 03	967.70	920.30	836.40	864.60	910.00	831.60	895.70	1 056.40	(20)
SELECTED INDICATORS PER HEAD OF POPULATION(b)										
State final demand										
Chain volume measures trend(c) (\$'000)	Jun qtr 03	9.8	9.6	9.1	9.0	9.7	8.0	13.2	16.6	(1)
Retail turnover										
Current prices original (\$)	Jul 03	756.3	713.6	780.6	708.6	739.5	650.8	858.0	960.3	(3)
Current prices, trend	Jul 03	774.9	724.0	776.8	733.0	754.0	667.6	777.1	983.1	(3)
New motor vehicle sales trend (no. per '000 population)	Aug 03	4.0	4.3	4.2	3.4	3.8	3.2	3.2	3.9	(4)
Private new capital expenditure										
Current prices trend (\$)	Jun qtr 03	534.1	641.0	606.7	712.0	988.0	434.7	2 404.7	525.0	(5)
Dwelling unit approvals										
Original (no. per '000 population)	Jul 03	0.650	0.778	1.146	0.638	0.990	0.546	0.370	0.574	(7)
Trend (no. per '000 population)	Jul 03	0.571	0.834	0.902	0.566	0.902	0.525	0.315	0.537	(7)
Secured housing finance(d) (\$)	Jul 03	658.7	507.2	584.9	441.4	591.7	298.6	282.6	539.3	(22)
PERCENTAGE CHANGE FROM PREVIOUS PERIOD										
State final demand										
Chain volume measures trend (%)	Jun qtr 03	1.0	0.5	1.2	1.8	1.6	0.5	2.2	1.1	(1)
Retail turnover										
Current prices original (%)	Jul 03	4.0	5.8	8.4	3.6	7.4	7.7	11.5	0.8	(3)
Current prices, trend	Jul 03	0.4	0.5	1.2	0.2	1.0	1.4	0.7	0.1	(3)
New motor vehicle sales trend (%)	Aug 03	1.5	0.7	2.2	1.2	2.0	2.5	-3.1	0.6	(4)
Private new capital expenditure										
Current prices trend (%)	Jun qtr 03	0.0	-1.5	0.9	8.4	5.6	-2.4	1.5	3.7	(5)
Dwelling unit approvals										
Original (%)	Jul 03	22.6	-3.3	44.5	7.5	-20.4	37.6	9.0	14.8	(7)
Trend (%)	Jul 03	0.0	2.3	3.8	0.9	-0.3	7.1	0.3	-3.4	(7)
CPI—All groups (%)	Jun qtr 03	0.1	0.0	0.0	-0.2	0.0	0.6	0.3	0.0	(13)
Participation rate trend(e) (%)	Aug 03	-0.2	-0.1	-0.1	-0.1	-0.1	0.0	-0.9	-0.1	(17)
Unemployment rate trend(e) (%)	Aug 03	-0.1	0.0	0.0	-0.1	0.1	-0.3	-0.4	0.1	(17)
Average weekly earnings (full-time adults; ordinary time) trend (%)	May qtr 03	1.7	1.5	1.2	2.6	1.5	0.7	1.8	1.9	(20)
Secured housing finance (%)	Jul 03	11.3	8.5	14.5	4.0	10.7	11.3	-3.6	9.3	(22)
(a) Base year of index 1989–90 = 100.										
(b) The latest quarterly estimate of Australian resident population has been used to calculate ratios for subsequent periods.										
(c) Reference year for chain volume measures is 2001–02.										
(d) Excludes alterations and additions. Includes refinancing.										
(e) Change is shown in terms of percentage points.										

3

STATE ACCOUNTS AT CURRENT PRICES

Period	Final consumption expenditure		Gross fixed capital formation		State final demand	Gross State product	Compensation of employees
	Households	General government	Private	Public			
ANNUAL (\$m)							
2000-01	28 875	9 143	8 522	112	46 654	44 119	20 857
2001-02	30 907	9 709	8 186	1 550	50 350	47 002	21 895
2002-03	33 488	10 197	10 186	1 446	55 314	n.a.	23 139
QUARTERLY, TREND (\$m)							
2001-02							
March	7 805	2 441	2 105	390	12 740	n.a.	5 520
June	7 985	2 470	2 232	375	13 061	n.a.	5 577
2002-03							
September	8 153	2 489	2 329	363	13 334	n.a.	5 639
December	8 304	2 522	2 443	358	13 621	n.a.	5 731
March	8 458	2 567	2 567	359	13 948	n.a.	5 830
June	8 607	2 607	2 675	366	14 299	n.a.	5 293

Source: Australian National Accounts: National Income, Expenditure and Product (cat. no. 5206.0), and Australian National Accounts: State Accounts (cat. no. 5220.0).

4

STATE ACCOUNTS AT CHAIN VOLUME MEASURES(a)

Period	Final consumption expenditure		Gross fixed capital formation		State final demand	Gross State product
	Households	General government	Private	Public		
ANNUAL (\$m)						
1999-00	27 835	9 000	(b)10 516	(b)-2 384	45 859	42 727
2000-01	28 880	9 143	8 522	-732	46 658	44 119
2001-02	30 470	9 352	8 180	521	49 463	45 765
QUARTERLY, TREND (\$m)						
2001-02						
March	7 782	2 434	2 107	388	12 709	n.a.
June	7 909	2 460	2 223	375	12 965	n.a.
2002-03						
September	7 996	2 486	2 308	364	13 154	n.a.
December	8 060	2 508	2 416	360	13 342	n.a.
March	8 146	2 528	2 540	361	13 573	n.a.
June	8 240	2 539	2 654	368	13 812	n.a.

(a) Reference year for chain volume measures is 2001-02.

(b) The negative figure for Public gross fixed capital formation and the larger than usual positive figure for Private gross fixed capital formation are the result of the sale of the South Australian electrical transmission network in December quarter 1999. For more information see *National Income, Expenditure and Product, Australian National Accounts, June 2000* (cat. no. 5206.0).

Source: Australian National Accounts: National Income, Expenditure and Product (cat. no. 5206.0), and Australian National Accounts: State Accounts (cat. no. 5220.0).

5

MERCHANDISE EXPORTS, BY SELECTED COMMODITY GROUP(a)

<i>Period</i>	<i>Meat and meat preparations</i>	<i>Wheat</i>	<i>Wine</i>	<i>Wool and sheepskins (excl. wool tops)</i>	<i>Machinery</i>	<i>Metals and metal manufactures</i>	<i>Fish and crustaceans</i>	<i>Road vehicles, parts and accessories</i>	<i>Petroleum and petroleum products</i>	<i>Total(b)</i>
	\$'000	\$'000	\$'000	\$'000	\$'000	\$'000	\$'000	\$'000	\$'000	\$'000
2000-01	262 565	767 524	1 081 599	236 034	381 785	1 019 926	451 841	1 399 489	355 781	8 286 782
2001-02	316 263	1 154 933	1 358 316	256 722	321 445	913 417	474 854	1 613 919	250 728	9 103 263
2002-03	316 825	776 318	1 455 215	256 507	323 964	866 848	448 723	1 411 440	290 526	8 363 075
2001-02										
January	22 604	136 558	61 255	15 357	19 868	63 089	35 902	25 652	16 755	561 836
February	31 183	86 109	83 914	23 524	25 522	82 009	26 187	122 727	2 328	745 077
March	34 065	119 775	127 140	32 960	35 610	88 158	22 365	170 972	44 358	876 068
April	24 011	102 777	122 653	22 942	32 351	74 900	25 363	134 415	8 900	756 976
May	26 189	114 535	146 020	34 208	33 412	85 067	22 517	84 964	32 896	790 765
June	24 324	91 704	148 574	18 967	27 472	58 902	36 472	183 302	16 920	795 950
2002-03										
July	17 509	25 309	115 141	20 534	27 470	67 414	90 175	110 752	27 041	704 054
August	16 462	87 890	121 771	14 491	24 896	65 047	138 036	134 638	25 870	831 220
September	27 759	60 374	168 513	20 766	31 641	71 967	38 038	82 804	23 846	763 577
October	29 930	50 488	141 821	29 122	24 139	81 376	19 854	115 691	25 432	685 880
November	35 128	65 111	96 826	30 990	26 285	74 824	24 647	276 999	19 613	818 604
December	33 023	54 121	129 290	30 611	28 324	90 891	26 171	207 525	30 625	834 092
January	24 488	58 429	81 523	18 057	17 330	69 594	29 408	31 453	46 499	565 490
February	31 302	122 226	99 035	17 601	27 314	73 028	15 364	127 157	31 903	701 127
March	33 984	94 369	123 753	23 284	35 767	76 507	18 597	100 055	19 494	704 339
April	23 853	19 832	126 124	21 834	29 135	62 833	16 543	59 943	6 233	519 663
May	22 482	99 477	124 883	14 070	26 535	62 361	15 675	92 623	17 926	653 619
June	20 907	38 691	126 535	15 146	25 127	71 004	16 216	71 799	16 042	581 410
2003-04										
July	10 851	49 275	108 058	13 475	25 694	65 217	40 984	87 073	27 759	585 179

(a) Restrictions are placed on the release of statistics for certain commodities for reasons of confidentiality. These restrictions do not affect total export and import figures, but they can affect some items within commodity, industry and country tables. See *International Trade* (cat. no. 5422.0), Explanatory Notes, paragraph 30, for more details.

(b) Includes other commodity groups not listed.

Source: ABS data available on request.

6

MERCHANDISE EXPORTS, BY SELECTED COUNTRIES AND COUNTRY GROUPS(a)

Period	European Union					South-East and North-East Asia				
	United States of America	Middle East	United Kingdom	Total European Union	New Zealand	Japan	China	Hong Kong	ASEAN(b)	Total
	\$'000	\$'000	\$'000	\$'000	\$'000	\$'000	\$'000	\$'000	\$'000	\$'000
2000-01	1 354 759	1 335 811	713 525	1 232 563	480 887	963 481	437 939	298 939	683 694	2 882 839
2001-02	1 597 719	1 825 194	784 284	1 337 855	568 712	937 578	406 163	240 066	597 414	2 594 269
2002-03	1 402 983	1 329 851	798 499	1 354 563	627 175	931 791	421 886	223 416	683 503	2 675 698
2001-02										
January	44 318	156 335	34 647	75 972	21 104	39 434	17 643	31 673	54 174	169 495
February	96 390	159 853	48 505	93 817	39 929	61 201	20 759	25 147	54 562	191 254
March	151 253	187 747	70 929	134 750	54 261	59 059	63 357	27 514	53 655	245 651
April	131 376	191 395	64 676	96 837	61 889	74 655	33 973	12 231	41 571	196 230
May	129 531	133 050	79 270	116 645	36 358	53 042	37 268	19 133	51 573	205 755
June	179 897	149 770	78 219	124 464	44 543	84 535	27 599	14 205	53 962	208 237
2002-03										
July	74 918	102 167	69 831	116 422	55 005	129 520	24 783	7 936	52 596	270 954
August	149 657	99 934	69 969	115 131	64 639	189 807	29 888	15 393	47 653	311 563
September	95 913	126 778	107 251	170 585	46 478	91 725	35 019	7 956	53 856	236 810
October	124 514	107 491	77 700	115 453	51 528	64 473	34 478	13 004	63 230	217 091
November	240 775	175 617	37 899	74 682	55 019	35 195	53 288	30 257	52 332	210 876
December	165 146	103 930	71 837	122 023	81 860	54 844	39 916	22 573	87 657	262 046
January	61 787	83 362	46 480	83 484	23 593	86 515	39 487	50 976	46 086	253 578
February	103 797	165 742	60 527	106 139	51 631	50 361	47 342	17 404	62 103	197 409
March	118 222	104 982	63 846	130 454	50 848	60 422	25 578	25 291	64 105	197 460
April	85 415	40 123	67 729	116 576	47 729	36 980	46 334	9 696	52 303	171 147
May	87 473	146 536	65 793	106 248	43 049	51 947	20 310	15 526	51 836	162 969
June	95 367	73 188	59 637	97 367	55 796	80 003	25 464	7 405	49 747	183 795
2003-04										
July	96 575	73 737	57 420	100 994	46 811	79 865	31 429	14 431	54 847	203 939

(a) See *International Merchandise Trade, Australia* (cat. no. 5422.0) for country group definitions.

(b) Figures from September 2001 have been updated to include Cambodia in the ASEAN country grouping.

Source: ABS data available on request.

7

MERCHANDISE IMPORTS, BY SELECTED COMMODITY GROUP(a)

<i>Period</i>	<i>Food, beverages and tobacco</i>	<i>Petroleum and petroleum products</i>	<i>Chemicals</i>	<i>Textiles</i>	<i>Metals and metal manufactures</i>	<i>Machinery</i>	<i>Road vehicle parts and accessories</i>	<i>Other manufactured goods</i>	<i>Total(b)</i>
	\$'000	\$'000	\$'000	\$'000	\$'000	\$'000	\$'000	\$'000	\$'000
2000-01	183 196	968 428	284 227	97 281	315 327	1 205 016	854 759	926 817	5 044 553
2001-02	205 295	869 161	266 527	106 543	332 538	1 399 576	887 698	1 058 212	5 346 782
2002-03	248 600	859 621	291 629	100 963	394 043	1 458 478	997 945	1 103 585	5 724 303
2001-02									
January	16 611	1 347	26 023	9 135	33 252	136 134	63 910	94 197	406 187
February	16 447	127 019	19 898	8 556	24 823	109 118	73 577	91 103	490 816
March	12 504	39 514	35 457	8 338	26 536	94 835	72 474	79 012	389 943
April	11 993	78 266	24 836	9 947	27 980	113 247	81 305	79 415	450 747
May	14 585	62 102	27 331	9 842	27 092	117 219	80 639	86 692	445 885
June	15 103	64 704	14 566	8 448	26 002	96 307	73 499	77 657	393 051
2002-03									
July	17 666	66 712	18 971	7 211	33 106	111 832	88 041	91 501	454 751
August	20 355	63 951	19 172	11 171	35 439	121 990	83 005	97 867	476 144
September	19 907	79 309	20 554	8 920	32 522	123 896	77 186	92 519	474 629
October	27 427	75 644	20 997	11 574	36 988	138 644	102 861	111 149	549 856
November	25 409	99 478	18 138	8 474	32 137	129 215	85 053	98 790	523 005
December	23 239	138 539	18 900	7 312	29 398	161 327	57 850	91 780	549 430
January	20 923	10 582	27 344	7 314	37 903	134 051	81 618	100 239	443 540
February	17 995	143 475	37 879	6 736	29 245	91 534	76 676	92 669	522 238
March	19 157	21	38 516	8 263	31 177	95 171	82 654	86 550	384 994
April	19 564	69 369	26 974	8 053	29 854	114 399	82 397	77 587	450 509
May	18 060	84 235	26 358	8 739	35 544	132 815	92 347	79 074	496 503
June	18 898	28 307	17 827	7 196	30 731	103 603	88 258	83 859	398 703
2003-04									
July	19 982	23 137	18 137	7 805	33 387	130 876	89 615	100 641	445 900

(a) Restrictions are placed on the release of statistics for certain commodities for reasons of confidentiality. These restrictions do not affect total export and import figures, but they can affect some items within commodity, industry and country tables. See *International Trade* (cat. no. 5422.0), Explanatory Notes, paragraph 30, for more details.

(b) Includes other commodity groups not listed.

Source: ABS data available on request.

8

TURNOVER OF RETAIL ESTABLISHMENTS, BY INDUSTRY—TREND

Period	Food retailing	Department stores	Clothing and soft good retailing	Household good retailing	Recreational good retailing	Other retailing	Hospitality and services	Total
	\$m	\$m	\$m	\$m	\$m	\$m	\$m	\$m
2001-02								
May	439.5	99.3	53.8	138.7	28.3	118.2	176.0	1 054.3
June	443.2	99.5	54.1	137.7	28.7	119.9	178.4	1 061.5
2002-03								
July	446.8	99.9	54.7	136.2	29.4	120.9	180.5	1 068.1
August	449.6	100.7	55.6	135.1	30.5	121.0	182.0	1 073.7
September	451.5	101.7	56.8	134.6	31.5	120.4	182.4	1 078.0
October	452.5	102.8	58.2	134.6	32.3	119.0	182.0	1 080.6
November	452.9	103.8	59.6	135.0	32.9	117.3	181.3	1 082.5
December	453.5	104.4	60.9	135.3	33.5	116.0	181.1	1 084.8
January	455.0	105.0	62.0	135.0	34.3	115.8	182.0	1 089.2
February	457.4	105.6	62.6	134.5	35.2	116.9	183.5	1 095.7
March	459.9	106.4	62.8	134.2	36.0	118.7	184.9	1 102.8
April	462.1	107.2	62.8	134.4	36.5	120.5	185.7	1 109.0
May	463.8	108.0	62.6	134.8	36.9	121.9	186.0	1 114.0
June	464.9	108.5	62.3	135.4	37.0	123.0	186.2	1 117.7
2003-04								
July	465.8	108.8	61.8	136.1	37.0	123.4	186.0	1 120.1

Source: Retail Trade, Australia (cat. no. 8501.0).

9

NEW MOTOR VEHICLE SALES, BY TYPE OF VEHICLE

Period	Original			Seasonally adjusted			Trend estimate		
	Passenger vehicles	Other vehicles	Total	Passenger vehicles	Other vehicles	Total	Passenger vehicles	Other vehicles	Total
2001-02									
June	2 727	1 258	3 985	2 954	1 405	4 359	2 936	1 406	4 342
2002-03									
July	3 049	1 408	4 457	2 941	1 419	4 360	2 982	1 437	4 419
August	3 108	1 429	4 537	3 010	1 417	4 427	2 985	1 433	4 418
September	2 936	1 251	4 187	3 121	1 460	4 581	2 984	1 433	4 417
October	3 109	1 390	4 499	2 989	1 445	4 434	3 000	1 444	4 444
November	3 134	1 507	4 641	2 925	1 501	4 426	3 050	1 474	4 524
December	3 062	1 469	4 531	2 862	1 276	4 138	3 136	1 513	4 649
January	2 653	1 335	3 988	3 467	1 769	5 236	3 245	1 548	4 793
February	3 290	1 464	4 754	3 476	1 634	5 110	3 346	1 577	4 923
March	3 562	1 585	5 147	3 440	1 512	4 952	3 416	1 602	5 018
April	3 018	1 489	4 507	3 384	1 660	5 044	3 448	1 623	5 071
May	3 581	1 692	5 273	3 506	1 552	5 058	3 453	1 646	5 099
June	3 869	2 220	6 089	3 365	1 697	5 062	3 460	1 672	5 132
2003-04									
July	3 547	1 751	5 298	3 420	1 758	5 178	3 472	1 699	5 171
August	3 539	1 724	5 263	3 629	1 744	5 373	3 498	1 737	5 235

Source: Sales of New Motor Vehicles, Australia (cat. no. 9314.0.55.001).

10

ACTUAL PRIVATE NEW CAPITAL EXPENDITURE, BY SELECTED INDUSTRY AND TYPE OF ASSET

Period	Industry			Total	Type of asset	
	Mining	Manufacturing	Other selected industries		New buildings and structures	Equipment, plant and machinery
ANNUAL (\$m)						
2000-01	434	891	1 537	2 862	692	2 170
2001-02	355	927	1 831	3 113	617	2 496
2002-03	648	1 176	2 189	4 015	778	3 238
QUARTERLY, ORIGINAL (\$m)						
2001-02						
March	78	198	439	714	136	578
June	101	256	539	897	159	738
2002-03						
September	117	237	466	821	159	662
December	173	306	679	1 159	216	943
March	148	287	462	897	163	734
June	210	346	582	1 138	239	899
QUARTERLY, TREND (\$m)						
2001-02						
March	n.a.	n.a.	n.a.	813	161	652
June	n.a.	n.a.	n.a.	864	163	701
2002-03						
September	n.a.	n.a.	n.a.	890	165	725
December	n.a.	n.a.	n.a.	934	180	754
March	n.a.	n.a.	n.a.	1 004	205	799
June	n.a.	n.a.	n.a.	1 088	228	860

Source: Private New Capital Expenditure, Australia (cat. no. 5625.0) and ABS data available on request.

11

TOURIST ACCOMMODATION

Period	Licensed hotels with facilities				Motels and guesthouses				Serviced apartments			
	Estab-lish-ments	Guest rooms	Room occu-pancy	Takings	Estab-lish-ments	Guest rooms	Room occu-pancy	Takings	Estab-lish-ments	Guest rooms	Room occu-pancy	Takings
	no.	no.	%	\$'000	no.	no.	%	\$'000	no.	no.	%	\$'000
2000-01												
March	62	3 905	59.9	25 686	146	5 217	55.2	21 889	27	1 280	67.1	7 955
June	61	4 066	55.9	23 849	146	5 230	50.5	20 289	27	1 300	63.2	7 959
2001-02												
September	61	4 078	56.3	23 498	146	5 231	49.7	19 926	27	1 293	60.1	7 019
December	61	4 083	61.0	26 556	144	5 170	51.9	21 044	27	1 283	67.0	8 218
March	62	4 091	61.6	27 321	145	5 196	55.6	22 468	27	1 293	70.5	8 454
June	62	4 364	55.4	24 362	145	5 234	50.4	20 482	29	1 357	65.6	8 078
2002-03												
September	63	4 381	57.9	26 109	144	5 220	49.4	20 150	30	1 430	65.8	8 595
December	62	4 362	64.8	31 051	145	5 232	55.6	23 424	31	1 435	70.3	10 424
March	64	4 653	56.4	26 778	147	5 316	52.9	22 478	32	4 604	60.3	9 879

Source: Tourist Accommodation, Australia (cat. no. 8635.0).

12

BUILDING APPROVALS

Period	Houses		Total dwelling units		New residential building \$m	Alterations and additions to residential building \$m	Total residential building \$m	Non-residential building \$m	Total building \$m
	Private sector	Total	Private sector	Total					
	no.	no.	no.	no.					
ANNUAL									
2000-01	5 555	5 644	6 659	6 775	735.6	157.3	892.9	718.2	1 611.1
2001-02	8 858	9 177	10 544	10 903	1 202.3	191.6	1 393.9	804.8	2 198.7
2002-03	8 241	8 602	10 391	10 822	1 372.9	270.0	1 642.8	1 001.5	2 644.3
MONTHLY, ORIGINAL									
2001-02									
April	701	714	970	987	111.3	16.2	127.5	55.8	183.3
May	795	823	953	981	119.3	16.5	135.9	55.5	191.4
June	716	742	798	826	96.2	17.6	113.9	68.3	182.1
2002-03									
July	795	843	877	935	113.7	20.1	133.8	53.3	187.2
August	807	838	1 037	1 072	110.2	22.0	132.2	121.0	253.2
September	762	795	825	860	99.7	20.3	120.0	75.1	195.1
October	729	767	1 083	1 125	198.0	20.5	218.5	56.1	274.6
November	720	760	881	933	117.1	20.1	137.2	162.8	300.0
December	570	614	822	882	111.7	19.5	131.2	64.6	195.8
January	493	514	756	783	93.7	16.7	110.3	42.4	152.8
February	633	651	715	745	96.4	20.3	116.6	65.2	181.8
March	667	678	1 040	1 051	120.8	49.8	170.6	48.4	218.9
April	591	614	683	706	88.8	20.3	109.1	95.6	204.7
May	704	720	805	823	107.8	20.5	128.3	105.4	233.6
June	770	808	867	907	115.1	20.0	135.0	111.5	246.5
2003-04									
July	849	866	956	975	134.0	22.4	156.4	86.2	242.7
MONTHLY, TREND									
2001-02									
April	749	777	920	950	107.2	16.5	123.7	63.2	186.8
May	747	774	921	951	104.8	17.3	122.1	60.1	182.2
June	750	779	924	956	103.0	18.1	121.1	60.7	181.8
2002-03									
July	754	786	925	961	102.5	18.9	121.4	66.6	188.0
August	751	787	926	967	103.8	19.6	123.4	75.9	199.3
September	736	775	923	968	106.5	19.9	126.4	84.3	210.7
October	710	749	914	961	109.7	20.0	129.7	89.5	219.2
November	677	713	899	944	112.2	20.1	132.3	89.8	222.1
December	644	676	871	913	112.6	20.3	132.9	85.7	218.6
January	621	648	843	879	110.9	20.6	131.6	80.5	212.0
February	617	639	826	855	108.6	21.1	129.7	77.4	207.1
March	633	653	818	843	106.8	21.4	128.2	79.1	207.3
April	660	680	820	843	105.9	21.4	127.4	85.6	213.0
May	692	713	827	849	106.1	21.3	127.4	95.2	222.7
June	724	746	834	857	106.8	21.1	128.0	105.3	233.3
2003-04									
July	753	777	840	865	107.9	20.9	128.8	112.8	241.5

Source: Building Approvals, Australia (cat. no. 8731.0) and ABS data available on request.

13

BUILDING COMMENCEMENTS

Period	New houses		Total dwelling units(a)		New residential building \$m	Alterations and additions to residential building \$m	Non-residential building		
	Private sector	Total	Private sector	Total			Private sector	Total	Total building
	no.	no.	no.	no.			\$m	\$m	\$m
1999-00	7 729	7 856	9 266	9 410	1 044.8	198.8	351.2	576.9	1 820.5
2000-01	5 303	5 390	6 442	6 556	779.2	161.4	390.4	729.6	1 670.1
2001-02	8 030	8 281	9 702	9 991	1 236.2	197.3	575.0	761.9	2 195.5
2000-01									
March	1 157	1 179	1 562	1 597	186.5	43.6	70.9	111.2	341.2
June	1 422	1 443	1 605	1 628	196.0	47.9	91.9	300.7	544.6
2001-02									
September	1 835	1 857	2 365	2 400	324.0	45.1	145.3	188.7	557.9
December	2 217	2 273	2 543	2 613	307.8	52.7	167.2	199.4	559.9
March	1 853	1 949	2 232	2 335	280.0	50.5	122.6	173.7	504.1
June	2 125	2 202	2 563	2 644	324.4	49.0	139.9	200.1	573.6
2002-03									
September	2 300	2 401	2 617	2 730	355.6	55.9	177.7	249.0	660.5
December	1 897	2 004	2 636	2 759	402.7	75.2	144.7	268.1	746.0
March	1 849	1 933	2 262	2 376	323.8	58.4	155.7	188.6	570.8

(a) Includes conversions.

Source: Building Activity, Australia (cat. no. 8752.0).

VALUE OF BUILDING WORK DONE AND COMPLETED DURING PERIOD

Period	New houses		New residential building			Non-residential building		Total building		
	Private sector	Total	Private sector	Total	Alterations and additions to residential building	Total residential building	Private sector	Total	Private sector	Total
	\$m	\$m	\$m	\$m	\$m	\$m	\$m	\$m	\$m	\$m
VALUE OF BUILDING WORK DONE										
1999-00	798.1	812.2	984.5	1 000.0	195.5	1 195.4	409.9	629.4	1 585.1	1 824.8
2000-01	679.7	686.9	835.5	845.0	161.9	1 006.9	395.0	624.0	1 385.4	1 630.9
2001-02	852.9	871.7	1 043.3	1 065.3	193.9	1 259.2	522.1	778.2	1 754.6	2 037.4
2000-01										
March	162.6	164.0	193.9	195.7	40.7	236.4	97.2	145.7	330.1	382.1
June	161.6	163.8	197.3	200.3	48.2	248.6	97.2	163.9	340.6	412.5
2001-02										
September	184.2	187.2	227.7	231.2	48.7	279.9	112.7	170.6	386.9	450.6
December	219.4	222.6	261.9	265.5	48.4	314.0	146.9	213.8	456.3	527.7
March	215.1	220.0	262.5	268.6	46.9	315.5	131.3	185.0	439.7	500.4
June	234.2	242.0	291.2	300.0	49.8	349.8	131.3	208.9	471.7	558.7
2002-03										
September	259.7	269.0	318.5	328.6	56.4	385.0	163.1	224.6	537.4	609.6
December	255.9	265.3	319.6	330.0	67.9	397.9	151.7	212.0	538.7	609.9
March	267.3	275.9	312.6	322.6	60.4	382.9	147.6	209.3	520.0	592.2
VALUE OF BUILDING WORK COMPLETED										
1999-00	713.5	730.1	867.6	886.2	191.9	1 078.1	363.0	538.4	1 419.4	1 616.4
2000-01	758.7	763.6	942.8	949.0	154.4	1 103.4	436.3	591.5	1 526.5	1 694.9
2001-02	750.8	766.9	884.9	904.3	180.6	1 084.9	430.7	718.7	1 489.7	1 803.5
2000-01										
March	173.0	174.3	216.5	217.9	34.9	252.8	82.4	138.5	330.9	391.3
June	188.0	188.3	213.7	213.9	52.2	266.1	137.9	164.9	402.4	431.0
2001-02										
September	149.9	153.2	173.1	177.6	55.0	232.6	75.5	121.1	300.5	353.7
December	194.3	197.6	220.5	224.4	38.1	262.5	129.3	259.9	386.3	522.4
March	174.8	177.2	231.9	234.8	39.4	274.2	83.8	127.4	353.7	401.6
June	231.7	238.9	259.4	267.4	48.1	315.6	142.1	210.3	449.2	525.9
2002-03										
September	209.1	219.4	240.1	252.2	45.5	297.7	111.7	164.9	396.6	462.6
December	242.1	247.2	356.7	362.6	62.1	424.7	130.0	161.6	548.5	586.4
March	196.3	202.9	227.5	234.4	55.2	289.6	144.7	194.8	427.1	484.4

Source: Building Activity, Australia (cat. no. 8752.0).

<i>Period</i>	<i>Pigmeat</i> <i>tonnes</i>	<i>Beef</i> <i>tonnes</i>	<i>Mutton</i> <i>tonnes</i>	<i>Lamb</i> <i>tonnes</i>	<i>Sawn timber</i> <i>m³</i>
2000-01	36 679	82 533	36 103	61 893	389 417
2001-02	48 329	85 882	30 342	64 285	434 577
2002-03	64 146	88 363	30 893	60 113	435 984
2000-01					
June	10 524	19 172	8 321	15 451	97 933
2001-02					
September	10 274	18 271	6 290	11 694	103 774
December	9 754	21 325	8 221	17 627	111 797
March	12 583	23 748	8 895	17 232	111 697
June	15 718	22 539	6 936	17 732	107 309
2002-03					
September	15 531	19 663	9 351	11 493	111 724
December	14 865	23 357	10 073	14 864	110 734
March	16 345	23 930	7 521	17 947	107 267
June	17 405	21 413	3 948	15 809	106 259

Source: *Livestock Products, Australia* (cat. no. 7215.0) and ABS data available on request.

<i>Period</i>	<i>Food</i>	<i>Alcohol and tobacco</i>	<i>Clothing and footwear</i>	<i>Housing</i>	<i>House furnishings, supplies and services</i>	<i>Health</i>	<i>Transportation</i>	<i>Communication</i>	<i>Recreation</i>	<i>Education</i>	<i>Miscellaneous</i>	<i>All groups</i>
ANNUAL AVERAGE (1989-90 = 100.0)												
2000-01	136.7	198.3	111.9	104.3	117.1	169.5	138.0	104.7	122.9	225.9	159.3	133.5
2001-02	143.1	207.3	111.1	108.2	120.6	173.0	135.8	105.8	126.9	235.8	165.1	137.2
2002-03	149.3	214.1	112.3	115.2	122.5	183.4	139.6	109.7	131.8	246.1	171.5	142.7
QUARTERLY (1989-90 = 100.0)												
2001-02												
March	144.6	207.8	110.6	108.6	120.0	173.7	133.9	106.2	129.0	240.6	166.0	137.7
June	143.6	210.0	113.0	109.5	120.9	178.0	138.4	107.3	129.9	240.6	167.0	139.1
2002-03												
September	145.4	210.4	111.5	112.1	121.4	178.1	138.0	109.2	131.5	240.7	171.2	140.3
December	148.1	213.3	112.2	113.0	123.2	178.1	138.8	109.6	131.5	240.7	170.9	141.5
March	151.9	216.0	111.9	117.9	122.5	183.2	144.0	109.9	132.4	251.5	171.6	144.6
June	151.9	216.8	113.5	117.8	122.9	194.0	137.4	110.1	131.7	251.5	172.2	144.3
PERCENTAGE CHANGE FROM SAME QUARTER OF PREVIOUS YEAR												
2001-02												
March	3.7	3.6	0.1	4.0	2.2	1.8	-2.3	1.8	4.9	4.2	3.8	2.7
June	3.0	3.3	0.6	4.4	1.3	3.9	-1.4	3.3	6.0	4.2	3.6	3.0
2002-03												
September	3.5	2.2	2.9	5.0	0.7	4.2	1.2	5.4	6.8	4.2	4.7	3.7
December	3.0	3.8	0.0	4.7	1.9	5.2	3.3	3.4	4.7	4.2	4.3	3.6
March	5.0	3.9	1.2	8.6	2.1	5.5	7.5	3.5	2.6	4.5	3.4	5.0
June	5.8	3.2	0.4	7.6	1.7	9.0	-0.7	2.6	1.4	4.5	3.1	3.7
PERCENTAGE CHANGE FROM PREVIOUS QUARTER												
2001-02												
March	0.6	1.1	-1.4	0.6	-0.7	2.6	-0.4	0.2	2.7	4.1	1.3	0.8
June	-0.7	1.1	2.2	0.8	0.8	2.5	3.4	1.0	0.7	0.0	0.6	1.0
2002-03												
September	1.3	0.2	-1.3	2.4	0.4	0.1	-0.3	1.8	1.2	0.0	2.5	0.9
December	1.9	1.4	0.6	0.8	1.5	0.0	0.6	0.4	0.0	0.0	-0.2	0.9
March	2.6	1.3	-0.3	4.3	-0.6	2.9	3.7	0.3	0.7	4.5	0.4	2.2
June	0.0	0.4	1.4	-0.1	0.3	5.9	-4.6	0.2	-0.5	0.0	0.3	-0.2

Source: Consumer Price Index (cat. no. 6401.0).

17

ESTIMATED RESIDENT POPULATION AND COMPONENTS OF POPULATION CHANGE(a)

Period	Net migration			Total increase	Population at end of period
	Natural increase	Interstate	Overseas(b)		
1999-00	6 306	-3 531	3 829	7 219	1 505 038
2000-01	5 495	-2 418	2 765	6 690	1 511 728
2001-02	5 887	-1 854	4 481	8 514	1 520 242
2000-01					
March	1 691	-821	1 276	2 358	1 510 386
June	1 272	-190	46	1 342	1 511 728
2001-02					
September	1 244	-632	1 130	1 742	1 513 470
December	1 264	-171	1 185	2 278	1 515 748
March	1 737	-529	1 665	2 873	1 518 621
June	1 642	-522	501	1 621	1 520 242
2002-03					
September	948	-17	1 283	2 214	1 522 456
December	1 484	-741	937	1 680	1 524 136
March	1 704	-513	2 827	4 018	1 528 154

(a) Differences between the sum of the components and the total of population growth are attributed to intercensal discrepancy.

(b) Includes category jumping. For further information please see *Demography Working Paper 2003/1—Estimated Resident Population and Measurement of Category Jumping*.

Source: Australian Demographic Statistics (cat. no. 3101.0).

18

BIRTHS, DEATHS, MARRIAGES AND DIVORCES(a)

Period	Registrations			
	Births	Deaths	Marriages	Divorces
1999-00	17 896	11 590	8 428	4 197
2000-01	17 414	11 919	7 689	4 072
2001-02	17 481	11 594	7 474	4 448
2000-01				
December	4 274	2 889	2 703	1 031
March	4 402	2 711	2 175	824
June	4 297	3 025	1 719	1 161
2001-02				
September	4 398	3 154	1 096	1 387
December	4 109	2 845	2 444	1 173
March	4 564	2 827	2 135	930
June	4 410	2 768	1 799	958
2002-03				
September	4 355	3 407	1 019	1 062
December	4 327	2 843	2 419	n.y.a.
March	4 265	2 561	n.y.a.	n.y.a.

(a) The quarterly series of Marriage and Divorce numbers has been discontinued. Numbers and rates for both collections are available through the annual ABS publication *Marriages and Divorces* (cat. no. 3310.0).

Source: Australian Demographic Statistics (cat. no. 3101.0).

19

CIVILIAN LABOUR FORCE STATUS(a)

Period	Employed full-time		Employed part-time		Total employed		Unemployed		Labour force	
	Males	Females	Males	Females	Males	Females	Males	Females	Males	Females
ANNUAL AVERAGE ('000)										
2000-01	322.6	156.7	54.8	143.5	377.4	300.2	32.6	20.2	410.0	320.4
2001-02	319.2	153.2	59.2	153.1	378.4	306.3	31.8	20.0	410.2	326.2
2002-03	331.8	159.6	56.8	156.5	388.6	316.1	27.7	19.0	416.4	335.1
MONTHLY, ORIGINAL ('000)										
2001-02										
June	318.3	147.0	61.9	164.7	380.2	311.7	29.9	19.5	410.1	331.2
2002-03										
July	325.3	149.7	56.8	155.6	382.1	305.3	26.0	18.5	408.1	323.8
August	324.8	150.6	54.8	155.7	379.6	306.3	28.8	20.1	408.4	326.4
September	327.8	154.8	63.3	158.8	391.1	313.5	26.9	21.2	418.0	334.7
October	322.4	155.4	62.2	157.5	384.6	312.9	26.2	18.9	410.8	331.8
November	327.1	154.1	57.2	160.1	384.3	314.2	26.7	17.0	410.9	331.2
December	337.6	162.7	56.3	154.4	393.9	317.1	24.3	17.6	418.2	334.6
January	336.0	163.1	51.0	149.4	387.0	312.5	30.5	18.8	417.5	331.4
February	338.4	168.6	50.6	150.0	389.0	318.6	31.5	19.9	420.5	338.5
March	331.8	166.1	59.8	158.4	391.6	324.5	26.7	20.0	418.3	344.4
April	333.2	163.6	58.7	158.6	391.9	322.2	28.8	17.9	420.6	340.0
May	336.7	165.1	56.4	158.2	393.2	323.3	29.1	18.7	422.3	342.0
June	340.8	160.9	54.5	161.8	395.3	322.7	27.3	19.3	422.6	342.0
2003-04										
July	341.1	168.5	57.1	151.6	398.2	320.1	23.5	19.0	421.7	339.1
August	335.4	160.7	60.0	157.4	395.4	318.0	23.8	20.3	419.2	338.3
MONTHLY, TREND ('000)										
2001-02										
June	322.6	150.7	59.8	159.2	382.4	309.9	30.0	19.6	412.3	329.5
2002-03										
July	323.3	150.8	59.5	158.8	382.8	309.6	29.3	19.9	412.1	329.5
August	324.1	151.1	59.6	158.1	383.7	309.2	28.4	20.1	412.1	329.3
September	325.3	152.0	59.6	157.2	384.9	309.2	27.4	20.0	412.3	329.2
October	327.1	153.6	59.0	156.5	386.1	310.1	26.6	19.6	412.7	329.7
November	329.2	156.2	57.8	155.8	387.0	312.0	26.3	19.1	413.4	331.1
December	331.2	159.4	56.6	155.1	387.8	314.5	26.5	18.5	414.3	333.1
January	333.0	162.4	55.5	155.0	388.5	317.4	27.1	18.2	415.6	335.6
February	334.7	165.0	54.8	155.2	389.5	320.2	27.8	18.0	417.3	338.2
March	336.2	166.6	54.7	155.7	390.9	322.3	28.4	18.2	419.3	340.5
April	337.2	167.0	55.4	156.4	392.6	323.4	28.4	18.5	421.0	341.9
May	338.1	166.6	56.1	156.9	394.2	323.5	28.1	18.9	422.2	342.5
June	338.8	165.9	56.9	157.2	395.7	323.1	27.4	19.3	423.1	342.5
2003-04										
July	339.2	165.1	57.7	157.4	396.9	322.5	26.6	19.7	423.5	342.2
August	339.3	164.2	58.6	157.6	397.9	321.8	25.9	20.0	423.8	341.8

(a) Population aged 15 years and over.

Source: Labour Force, Australia (cat. no. 6202.0).

Period	Civilian population			Unemployment rate			Participation rate		
	Males aged 15 and over	Females aged 15 and over	Persons aged 15-19	Males all ages	Females all ages	Persons all ages	Males	Females	Persons
	'000	'000	%	%	%	%	%	%	%
ANNUAL AVERAGE									
2000-01	591.6	616.9	17.9	8.0	6.3	7.2	69.3	51.9	60.4
2001-02	595.4	620.5	18.5	7.8	6.1	7.1	68.9	52.6	60.6
2002-03	600.7	625.5	16.8	6.7	5.7	6.2	69.3	53.6	61.3
MONTHLY, ORIGINAL									
2001-02									
June	597.4	622.5	17.5	7.3	5.9	6.7	68.6	53.2	60.8
2002-03									
July	597.9	623.0	13.0	6.4	5.7	6.1	68.3	52.0	59.9
August	598.4	623.5	16.3	7.0	6.2	6.7	68.2	52.4	60.1
September	598.9	624.0	16.6	6.4	6.3	6.4	69.8	53.6	61.5
October	599.3	624.4	16.3	6.4	5.7	6.1	68.5	53.1	60.7
November	599.8	624.8	14.9	6.5	5.1	5.9	68.5	53.0	60.6
December	600.2	625.2	15.5	5.8	5.3	5.6	69.7	53.5	61.4
January	600.9	625.8	19.7	7.3	5.7	6.6	69.5	53.0	61.0
February	601.6	626.3	18.3	7.5	5.9	6.8	69.9	54.0	61.8
March	602.3	626.9	15.9	6.4	5.8	6.1	69.4	54.9	62.0
April	602.7	627.1	18.0	6.8	5.3	6.1	69.8	54.2	61.9
May	603.0	627.4	20.1	6.9	5.5	6.3	70.0	54.5	62.1
June	603.4	627.6	17.4	6.5	5.6	6.1	70.0	54.5	62.1
2003-04									
July	603.8	628.1	15.5	5.6	5.6	5.6	69.8	54.0	61.8
August	604.3	628.4	18.4	5.7	6.0	5.8	69.4	53.8	61.5
MONTHLY, TREND									
2001-02									
June	n.a.	n.a.	n.a.	7.3	5.9	6.7	69.0	52.9	60.8
2002-03									
July	n.a.	n.a.	n.a.	7.1	6.0	6.6	68.9	52.9	60.7
August	n.a.	n.a.	n.a.	6.9	6.1	6.5	68.9	52.8	60.7
September	n.a.	n.a.	n.a.	6.6	6.1	6.4	68.8	52.8	60.6
October	n.a.	n.a.	n.a.	6.5	5.9	6.2	68.9	52.8	60.7
November	n.a.	n.a.	n.a.	6.4	5.8	6.1	68.9	53.0	60.8
December	n.a.	n.a.	n.a.	6.4	5.6	6.0	69.0	53.3	61.0
January	n.a.	n.a.	n.a.	6.5	5.4	6.0	69.2	53.6	61.2
February	n.a.	n.a.	n.a.	6.7	5.3	6.1	69.4	54.0	61.5
March	n.a.	n.a.	n.a.	6.8	5.3	6.1	69.6	54.3	61.8
April	n.a.	n.a.	n.a.	6.8	5.4	6.2	69.9	54.5	62.0
May	n.a.	n.a.	n.a.	6.6	5.5	6.1	70.0	54.6	62.1
June	n.a.	n.a.	n.a.	6.5	5.6	6.1	70.1	54.6	62.2
2003-04									
July	n.a.	n.a.	n.a.	6.3	5.8	6.1	70.1	54.5	62.2
August	n.a.	n.a.	n.a.	6.1	5.9	6.0	70.1	54.4	62.1

(a) Population aged 15 years and over.

Source: Labour Force, Australia (cat. no. 6202.0).

21

AVERAGE WEEKLY EARNINGS OF EMPLOYEES

Period	Males			Females			Persons		
	Full-time adult ordinary time earnings	Full-time adult total earnings	All males total earnings	Full-time adult ordinary time earnings	Full-time adult total earnings	All females total earnings	Full-time adult ordinary time earnings	Full-time adult total earnings	All employees total earnings
ANNUAL AVERAGE (\$ per week)									
2000-01	811.30	864.40	746.80	685.20	703.90	491.20	765.70	806.40	619.70
2001-02	830.20	890.18	775.00	731.10	744.33	505.18	797.18	841.68	643.75
2002-03	864.85	914.08	790.10	772.03	785.75	530.28	833.75	871.05	667.48
QUARTERLY, ORIGINAL (\$ per week)									
2001-02									
February	831.00	900.50	773.20	741.80	754.60	497.90	801.50	852.20	639.20
May	829.40	899.40	783.50	735.10	749.80	503.80	799.40	851.80	649.90
2002-03									
August	829.90	877.40	765.50	757.20	770.30	543.20	805.50	841.40	661.80
November	851.10	902.10	781.00	755.80	769.30	527.20	818.90	857.20	662.40
February	884.60	933.00	810.50	781.60	795.60	550.70	850.90	888.00	692.30
May	893.80	943.80	803.40	793.50	807.80	500.00	859.70	897.60	653.40
QUARTERLY, TREND (\$ per week)									
2001-02									
February	828.80	893.10	774.90	737.70	751.10	505.10	799.00	846.70	643.80
May	828.50	892.40	774.10	744.30	757.90	513.50	801.00	848.30	649.10
2002-03									
August	835.80	892.80	776.80	750.50	763.90	527.90	807.50	850.20	660.70
November	853.40	903.70	784.90	761.80	775.50	535.10	822.80	861.20	669.40
February	876.10	923.30	797.10	777.30	791.60	532.50	843.10	879.20	672.60
May	898.70	944.80	810.20	794.70	809.80	523.80	864.60	899.60	671.30

Source: Average Weekly Earnings, States and Australia (cat. no. 6302.0).

22

SECURED HOUSING FINANCE COMMITMENTS(a)

Period	Original		Seasonally adjusted		Trend	
	Dwelling units	Value	Dwelling units	Value	Dwelling units	Value
	no.	\$m	no.	\$m	no.	\$m
2001-02						
May	4 880	525	4 508	486	4 448	486
June	4 681	498	4 671	511	4 504	494
2002-03						
July	4 988	524	4 711	502	4 500	501
August	4 166	476	4 367	508	4 427	504
September	3 825	454	4 171	493	4 307	503
October	4 329	517	4 261	517	4 193	500
November	4 336	529	4 038	494	4 133	499
December	4 322	539	4 128	496	4 159	506
January	3 765	465	4 233	517	4 255	522
February	4 112	508	4 321	522	4 397	546
March	4 814	617	4 728	600	4 551	574
April	4 583	580	4 634	593	4 699	602
May	5 089	671	4 903	650	4 827	627
June	4 975	649	4 876	647	4 935	647
2003-04						
July	5 319	675	5 057	652	5 019	662

(a) Excludes alterations and additions. Includes refinancing.

Source: Housing Finance for Owner Occupation, Australia (cat. no. 5609.0).

23

FINANCE COMMITMENTS

Period	Commercial finance commitments			Personal finance commitments			
	Fixed loan facilities	Revolving credit facilities	Total commercial finance commitments	Fixed loan facilities	Revolving credit facilities	Total personal finance commitments	Total lease finance commitments
	\$m	\$m	\$m	\$m	\$m	\$m	\$m
2001-02							
May	457.3	220.1	677.4	193.8	158.7	352.5	16.3
June	595.1	370.9	966.0	188.7	187.9	376.6	17.3
2002-03							
July	593.0	413.3	1 006.3	198.3	180.2	378.5	15.2
August	524.6	484.1	1 008.7	195.7	180.2	375.9	12.3
September	524.0	433.9	957.9	180.2	150.1	330.4	13.4
October	545.4	372.3	917.7	190.4	182.3	372.8	14.2
November	519.2	341.6	860.8	199.1	190.1	389.2	12.8
December	706.9	373.0	108.9	210.0	204.9	414.9	14.2
January	616.6	272.2	888.9	210.5	147.3	357.8	15.3
February	469.0	244.5	713.5	210.0	155.4	365.4	13.6
March	589.7	289.8	879.5	218.9	204.8	423.6	17.3
April	602.5	208.2	810.7	212.2	186.4	398.6	13.1
May	571.8	269.8	841.6	234.1	205.9	440.0	15.5
June	788.5	316.2	1 104.7	239.1	210.9	450.0	18.6
2002-03							
July	651.5	452.7	1 104.2	234.9	222.6	457.5	16.6

Source: ABS data available on request.

SOURCES FOR SUMMARY TABLES (TABLES 1 AND 2)

- (1) *Australian National Accounts: National Income, Expenditure and Product*, cat. no. 5206.0—and ABS data available on request
- (2) International Merchandise Trade, ABS data available on request
- (3) *Retail Trade, Australia*, cat. no. 8501.0, Monthly
- (4) *Sales of New Motor Vehicles, Australia*, cat. no. 9314.0.55.001 Monthly
- (5) *Private New Capital Expenditure, Australia*, cat. no. 5625.0, Quarterly—and Ausstats data
- (6) *Tourist Accommodation, Australia*, cat. no. 8635.0, Quarterly
- (7) *Building Approvals, Australia*, cat. no. 8731.0, Monthly
- (8) *Building Activity, Australia*, cat. no. 8752.0, Quarterly
- (9) *Engineering Construction Activity, Australia*, cat. no. 8762.0, Quarterly
- (10) *Manufacturing Production, Australia, Preliminary*, cat. no. 8301.0, Quarterly
- (11) *Livestock Products, Australia*, cat. no. 7215.0, Quarterly—and ABS data available on request
- (12) *Actual and Expected Private Mineral Exploration, Australia*, cat. no. 8412.0, Quarterly
- (13) *Consumer Price Index*, cat. no. 6401.0, Quarterly
- (14) *Producer Price Indexes, Australia*, cat. no. 6427.0, Quarterly
- (15) *House Price Indexes: Eight Capital Cities*, cat. no. 6416.0, Quarterly
- (16) *Australian Demographic Statistics*, cat. no. 3101.0, Quarterly
- (17) *Labour Force, Australia, Preliminary*, cat. no. 6202.0, Monthly
- (18) *Job Vacancies, Australia*, cat. no. 6354.0, Quarterly
- (19) *Industrial Disputes, Australia*, cat. no. 6321.0, Monthly
- (20) *Average Weekly Earnings, States and Australia*, cat. no. 6302.0, Quarterly
- (21) *Wage Cost Index, Australia*, cat. no. 6345.0, Quarterly
- (22) *Housing Finance for Owner Occupation, Australia*, cat. no. 5609.0, Monthly
- (23) *Lending Finance, Australia*, cat. no. 5671.0, Monthly—and ABS data available on request
- (24) *Reserve Bank of Australia Bulletin*

FOR MORE INFORMATION...

- INTERNET* **www.abs.gov.au** the ABS web site is the best place to start for access to summary data from our latest publications, information about the ABS, advice about upcoming releases, our catalogue, and Australia Now—a statistical profile.
- LIBRARY* A range of ABS publications is available from public and tertiary libraries Australia-wide. Contact your nearest library to determine whether it has the ABS statistics you require, or visit our web site for a list of libraries.
- CPI INFOLINE* For current and historical Consumer Price Index data, call 1902 981 074 (call cost 77c per minute).
- DIAL-A-STATISTIC* For the latest figures for National Accounts, Balance of Payments, Labour Force, Average Weekly Earnings, Estimated Resident Population and the Consumer Price Index call 1900 986 400 (call cost 77c per minute).

INFORMATION SERVICE

Data which have been published and can be provided within five minutes are free of charge. Our information consultants can also help you to access the full range of ABS information—ABS user-pays services can be tailored to your needs, time frame and budget. Publications may be purchased. Specialists are on hand to help you with analytical or methodological advice.

- PHONE* **1300 135 070**
- EMAIL* **client.services@abs.gov.au**
- FAX* 1300 135 211
- POST* Client Services, ABS, GPO Box 796, Sydney 2001

WHY NOT SUBSCRIBE?

ABS subscription services provide regular, convenient and prompt deliveries of ABS publications and products as they are released. Email delivery of monthly and quarterly publications is available.

- PHONE* 1300 366 323
- EMAIL* subscriptions@abs.gov.au
- FAX* 03 9615 7848
- POST* Subscription Services, ABS, GPO Box 2796Y, Melbourne 3001



2130740010033
ISSN 1039-8880

RRP \$21.00